



# Long Paddock

## RENOVATOR

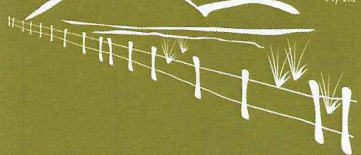
**ORGANIC FISH PELLETS**  
**NPK 6-5-4+12 Ca**  
**Plus 17% ORGANIC CARBON**

*The Long Paddock **RENOVATOR** Organic Fish Pellets have been formulated for progressive Turf and Landscape Managers seeking biological and environmental outcomes to their Renovation, Construction, Grow In and Landscape programs.*

### PRODUCT BENEFITS

- The unique formulation is designed for quick turf recovery after renovation as well as fast tracking plant maturity during pre and post construction programs.
- Low odour means the product can be applied to both public sports venues as well as landscape areas without the inconvenient odours that do occur with other organic products.
- Convenient to apply SGN 150 granule size
- Organic component derived from whole European Carp and Rice Hulls
- Increases essential soil carbon
- Microbe inoculated "P" content is derived from Organic Reactive Rock Phosphate and is in the environmentally friendly NON leaching form of P. One third is citrate soluble for immediate plant use whilst the remainder is slowly digested by an introduced proprietary microbial culture.
- Contains high levels of calcium which is derived from the Organic Rock Phosphate.
- Calcium and phosphate are the governors of plant health and strong Brix levels
- Plant Brix levels refer to the level or amount of Proteins, Vitamins, Minerals and in particular Sugars that exist within a healthy plant.
- The unique processing of the European Carp provides all of the essential elements for strong Brix levels that help support as well as improve the plants natural immune systems. This is important during plant stress after renovation as well as during the emergence of new seedlings or young vegetative plants.

**Long Paddock**  
organic solutions  
Pty Ltd



Distributed by:  
Long Paddock Organic Solutions Pty Ltd  
PO Box 278 Guyra NSW 2365  
Ph. 0408 533 090  
longpaddockorganicsolutions@gmail.com  
ABN: 36 161 255 974

Manufactured by:  
Charlie Carp Ltd. Ph. 1300 305 963  
Website: www.charliecarp.com



Made from whole European Carp



**Long Paddock**  
organic solutions

*Supporting sustainable environmental stewardship*

# Long Paddock

## RENOVATOR

**ORGANIC FISH PELLETS**  
**NPK 6-5-4+12 Ca**  
**Plus 17% ORGANIC CARBON**

### APPLICATION RATES

#### SPRING & AUTUMN - MAJOR RENOVATIONS

Large to medium Core Tying - Deep Scarifying - Topdressing  
Rates @ 5Kgs - 8Kgs/100m<sup>2</sup> therefore delivering a Nitrogen (N) growth recovery parameter of between 300g - 480g Unit N/100m<sup>2</sup>

#### MINOR RENOVATIONS - "Little & Often" Preventative Programs:

Mini Tyne - Hydro Jet - Verticutting - Topdressing  
Rates @ 3Kgs - 5Kgs/100m<sup>2</sup> therefore delivering a Nitrogen (N) growth recovery parameter of between 180g - 300g Unit N/100m<sup>2</sup>

#### PRE PLANT CONSTRUCTION - SAND PROFILES

Apply @ 30Kgs - 50Kgs/100m<sup>2</sup> (Incorporate into the top 15cm of growing medium)

#### POST PLANT - GROW IN

Apply @ 5Kgs/100m<sup>2</sup> (500Kgs/Ha) x 3 applications over 6 - 8 weeks

#### OVERSEEDING

Apply @ 6Kgs - 8Kgs/100m<sup>2</sup> (600Kgs - 800Kgs/Ha)

#### LANDSCAPE - BEDDING PREPARATION - FLOWERS & SHRUBS (INCLUDES NATIVES)

Sand based @ 6Kgs/100m<sup>2</sup> - rake into top 10cm  
Loamy sands @ 4Kgs/100m<sup>2</sup> - rake into top 10cm  
Clay loams @ 3Kgs/100m<sup>2</sup> - rake into top 10cm

TYPICAL ANALYSIS %		
NITROGEN (N)	6.0	New Long Paddock <b>Renovator</b> includes the important trace elements; Sulphur, Magnesium, Sodium, Iron, Manganese, Zinc, Copper, Cobalt, Boron and Molybdenum.
PHOSPHOROUS (P)	5.0	
POTASSIUM (K)	4.0	
CALCIUM (Ca)	12.0	
ORGANIC CARBON	17.0	
pH	5.3	

### ENVIRONMENTAL STEWARDSHIP

*Sportsturf Managers are collectively some of the greatest ambassadors for Environmental Stewardship anywhere on our planet! That's why it's important for all the turf professionals that use our Sportsturf Products to realise that whilst they are performing daily environmental stewardship at their own sportsturf complexes, they are also (WITH EVERY 20kg bag PURCHASED) helping to protect our Australian inland rivers from the No. 1 pest currently destroying the bio-diversity and health of these river systems.... European Carp!*

*We at Long Paddock Organic Solutions as well as our good friends at Charlie Carp would like to thank ALL Turf Managers for supporting our effort in protecting our precious and fragile inland rivers.*

### LONG PADDOCK SPORTSTURF RANGE - NATURALLY SUSTAINABLE

Long Paddock  
organic solutions  
pty Ltd

Distributed by:  
Long Paddock Organic Solutions Pty Ltd  
PO Box 278 Guyra NSW 2365  
Ph. 0408 533 090  
longpaddockorganicsolutions@gmail.com  
ABN: 36 161 255 974

Manufactured by:  
Charlie Carp Ltd. Ph. 1300 305 963  
Website: www.charliecarp.com

Long Paddock  
organic solutions

Supporting sustainable environmental stewardship